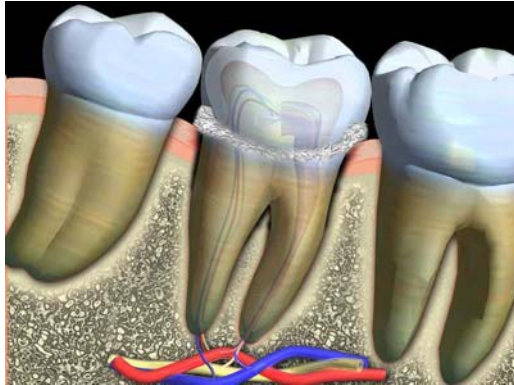
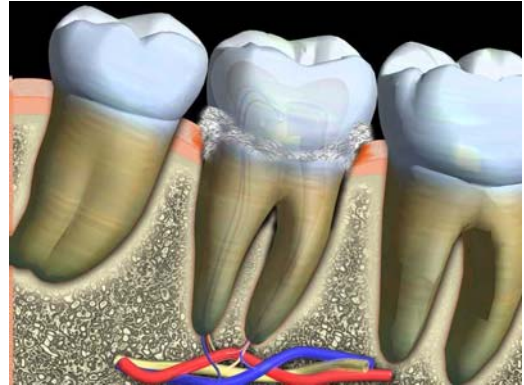


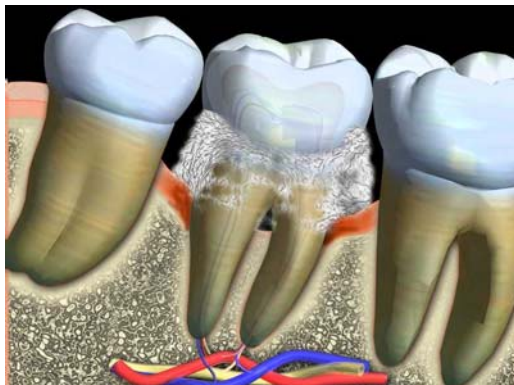
Stages of Periodontal Disease



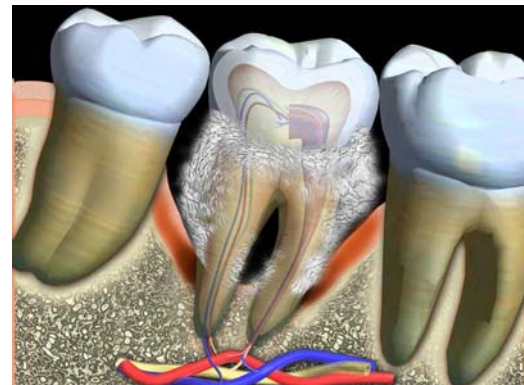
Gingivitis is the first stage of Periodontal disease. Plaque, (a sticky substance filled with bacteria) settles along the gum line of the teeth and causes the gums to swell, become red in appearance and bleed.



If the plaque is not removed, bacteria settles around the roots of the teeth and starts to destroy the supporting bone. The bone loss is not reversible. The gums become infected and pull away from the teeth, forming pockets.



As the pockets become deeper and the infection progresses, more bacteria accumulates and further bone loss occurs. The gums shrink away and the teeth start to become loose and may shift. Many people suffer from bad breath at this stage.



When periodontal disease has reached its advanced stage, painful abscesses can form in the gum. There is very little bone support left and the teeth are loose. In most cases, teeth that have reached this stage require extraction.