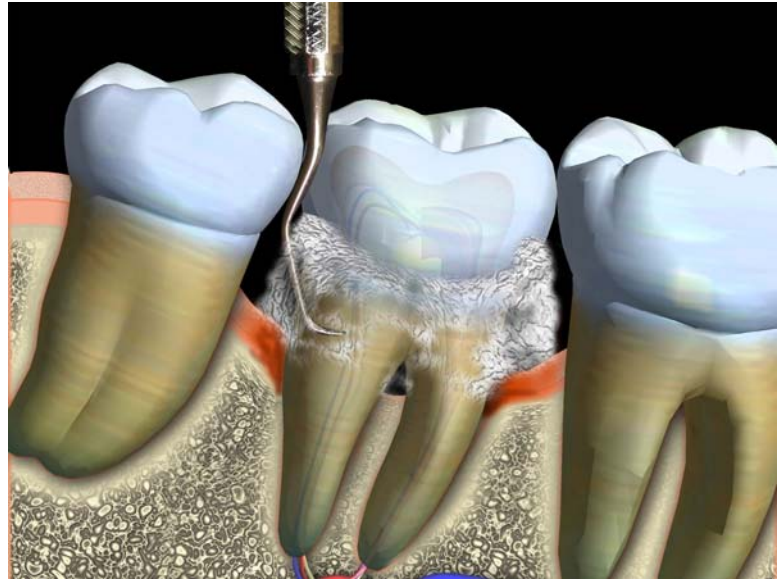


Scaling and Root Planing Therapy

Periodontal (gum) disease is one of the leading causes of tooth loss. Plaque and tartar that build up on the teeth contain bacteria, which cause tissue inflammation and destroy the supporting bone around the roots of the teeth. Removal of this bacteria is the initial step in treatment, and although deep cleaning cannot restore the lost bone and tissue, it can prevent the disease process from advancing and help to prevent tooth loss. The initial phase in the treatment of periodontal disease is scaling and root planing.



Scaling involves removal of the bacteria and other debris from the crown and root surfaces of the teeth. Root planing involves smoothing the

