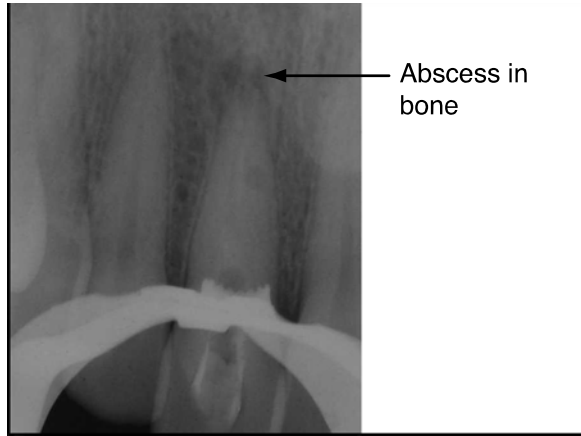
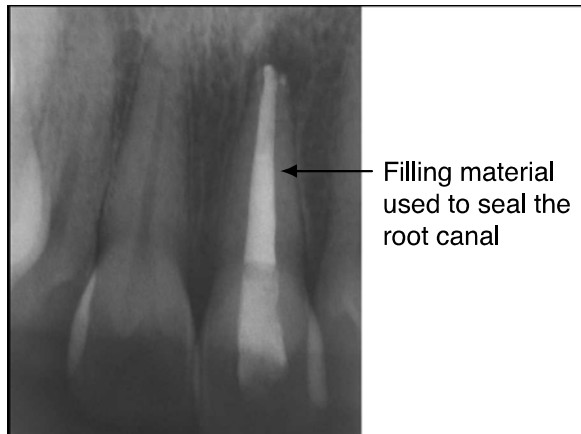
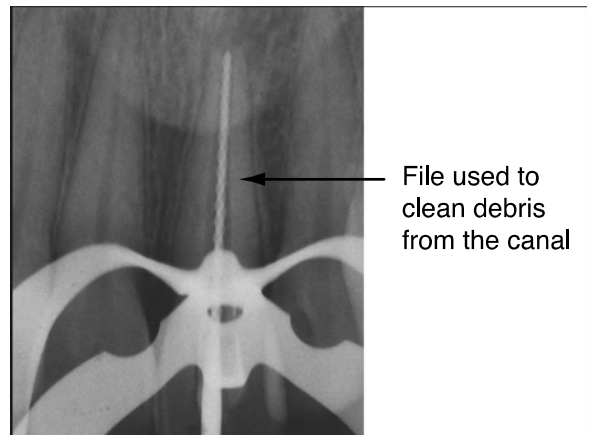


Root Canal Procedure



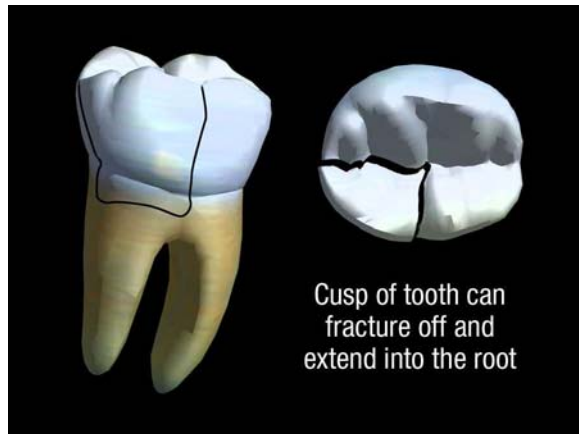
In a healthy tooth, the innermost pulp layer containing the nerves and blood vessels for the tooth is intact. This pulp tissue keeps the tooth vital. Dental decay can cause the pulp tissue to degenerate, creating toxic byproducts. An infectious process begins causing pain and pressure within the root, and eventually an abscess forms around the root.

When root canal treatment is performed, an opening is created through the top of the tooth to gain access to the pulp. The decayed tissue and infectious debris is cleaned out of the canals using small files.

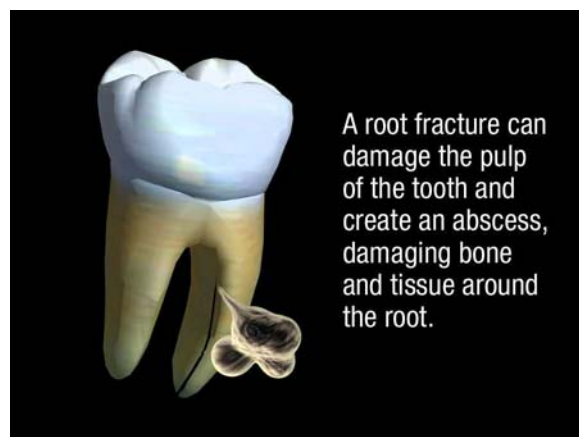


Once the canals have been thoroughly cleaned and are free of bacteria, they are sealed with a filling material and usually the abscess will heal. A temporary filling is used to close the opening in the tooth until the final restoration is placed.

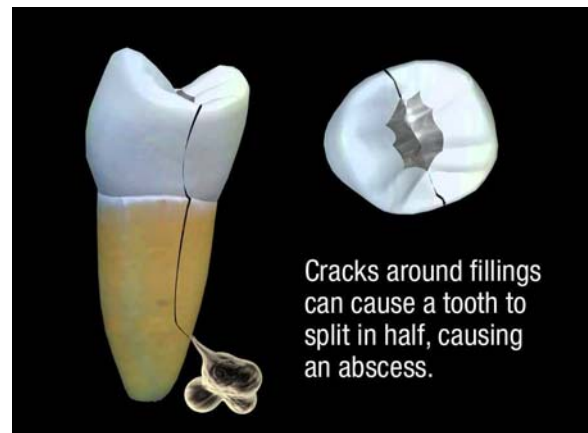
Cracks in Teeth



Cracks commonly occur in teeth with existing fillings or in teeth that have been weakened by multiple restorations. These types of cracks generally extend into the pulp of the tooth (the innermost layer containing nerves and blood vessels), and can result in a tooth becoming split around the filling. These teeth usually will develop an abscess around the root, and in most cases require extraction.



Cracks can occur in the crown of the tooth from excessive pressure on the tooth. Sometimes the cracks extend along grooves in the tooth, resulting in the fracture of an entire cusp. A crack can extend into the root of the tooth, and depending on how far into the root it extends, the tooth may not be restorable, and may require extraction. Teeth with these types of cracks can sometimes be restored using a full crown.



Vertical Root Fractures usually begin in the root of the tooth and extend upwards towards the crown of the tooth. These types of fractures are associated with an abscess that destroys bone and tissue around the root of the tooth. In a small number of cases these teeth may be saved by root surgery, but in most cases these teeth will require extraction.